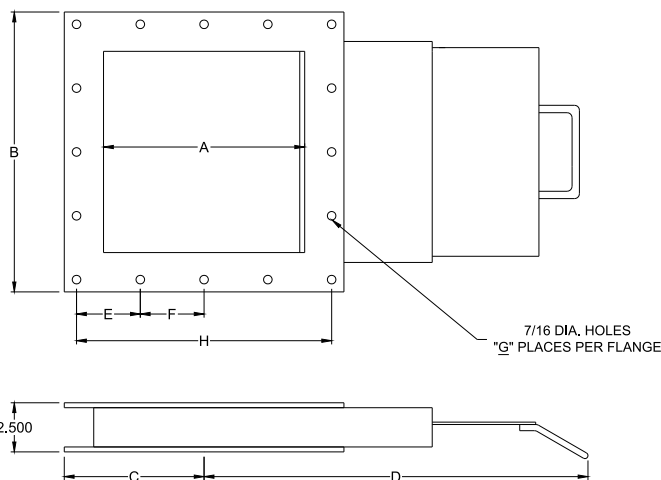
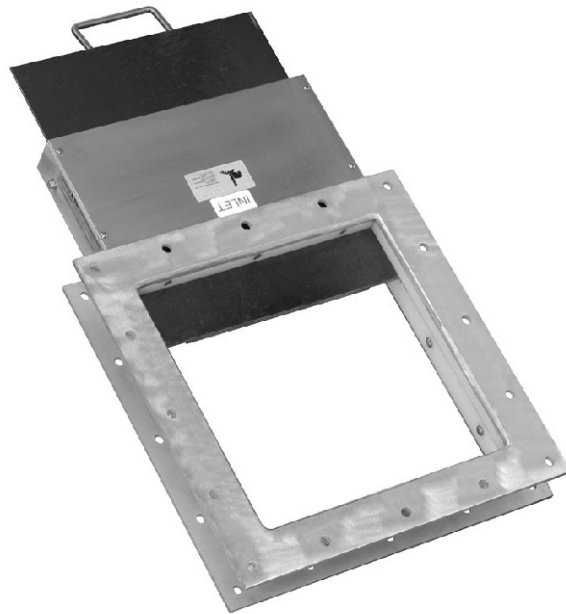


Silo/Hopper Shut Off

For shutting off the flow of materials under a silo or hopper.

Sizes 2" to 4" - Aluminum Frame Construction- Carbon Steel Blade - Hand operated



A SQ	B	C	D	E	F	G	H
8.25	12 1/2	6 1/4	16 1/4	--	5 1/2	8	11
10.25	14 1/2	7 1/4	19 1/4	--	3 1/4	16	13
12.25	16 1/2	8 1/4	22 1/4	3 1/2	4	16	15

Note: ALL DIMENSIONS ARE IN INCHES.